

FBS 2-5 - Plug-in bridge



3030161

<https://www.phoenixcontact.com/gb/products/3030161>

Please be informed that the data shown in this PDF document is generated from our online catalog. Please find the complete data in the user documentation. Our general terms of use for downloads are valid.



Plug-in bridge, pitch: 5.2 mm, number of positions: 2, length: 23 mm, color: red

Your advantages

- The 2- to 50-pos. jumpers can bridge up to 50 terminal blocks in the two bridge shafts of the CLIPLINE complete system in one step

Commercial data

| | |
|--------------------------------------|--------------------|
| Item number | 3030161 |
| Packing unit | 50 pc |
| Minimum order quantity | 50 pc |
| Sales key | BE2Z2X |
| Product key | BE2Z2X |
| Catalog page | Page 70 (C-1-2019) |
| GTIN | 4017918188511 |
| Weight per piece (including packing) | 1.724 g |
| Weight per piece (excluding packing) | 1.665 g |
| Customs tariff number | 85366990 |
| Country of origin | DE |

Technical data

Product properties

| | |
|---------------------|----------------|
| Product type | Plug-in bridge |
| Number of positions | 2 |
| Pitch | 5.2 mm |

Electrical properties

| | |
|----------------------|---|
| Maximum load current | 24 A (The current values for the jumpers can deviate when used in different modular terminal blocks. The precise values can be found in the accessories data for the respective modular terminal blocks.) |
|----------------------|---|

Connection data

| | |
|----------------------|---|
| Maximum load current | 24 A (The current values for the jumpers can deviate when used in different modular terminal blocks. The precise values can be found in the accessories data for the respective modular terminal blocks.) |
|----------------------|---|

Dimensions

| | |
|--------|---------|
| Width | 9 mm |
| Height | 22.7 mm |
| Depth | 3 mm |
| Length | 22.7 mm |
| Pitch | 5.2 mm |

Material specifications

| | |
|--|----------------|
| Color | red (RAL 3001) |
| Material | Copper |
| Flammability rating according to UL 94 | V0 |
| Insulating material | PA |

Environmental and real-life conditions

Ambient conditions

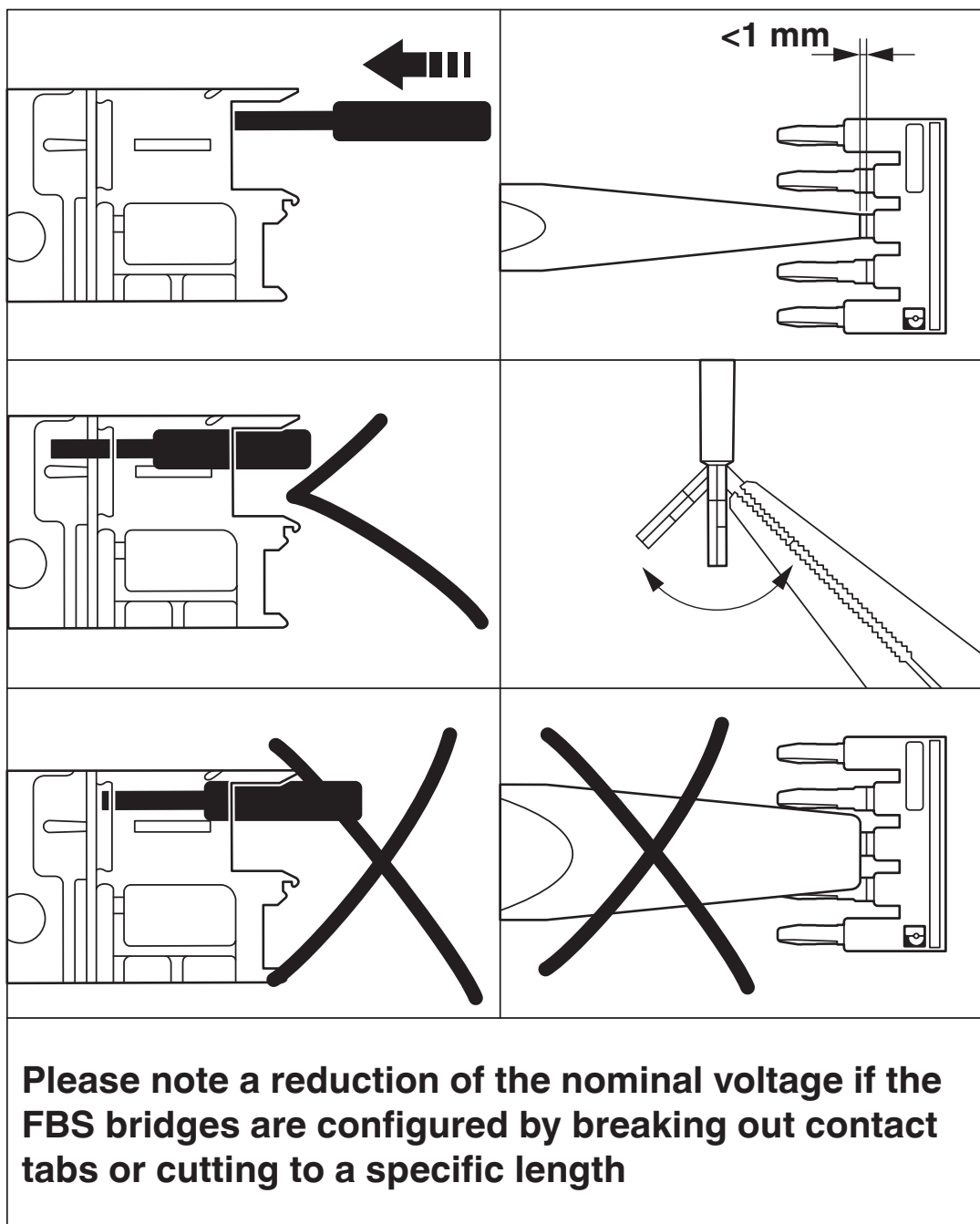
| | |
|--|--|
| Ambient temperature (operation) | -60 °C ... 110 °C (Operating temperature range incl. self-heating; for max. short-term operating temperature, see RTI Elec.) |
| Ambient temperature (storage/transport) | -25 °C ... 60 °C (for a short time, not exceeding 24 h, -60 °C to +70 °C) |
| Ambient temperature (assembly) | -5 °C ... 70 °C |
| Ambient temperature (actuation) | -5 °C ... 70 °C |
| Permissible humidity (operation) | 20 % ... 90 % |
| Permissible humidity (storage/transport) | 30 % ... 70 % |

Mounting

| | |
|---------------|------------------|
| Mounting type | Plug-in mounting |
|---------------|------------------|

Drawings

Schematic diagram



FBS 2-5 - Plug-in bridge



3030161
<https://www.phoenixcontact.com/gb/products/3030161>

Classifications

ECLASS

| | |
|-------------|----------|
| ECLASS-13.0 | 27250303 |
|-------------|----------|

ETIM

| | |
|----------|----------|
| ETIM 9.0 | EC000489 |
|----------|----------|

UNSPSC

| | |
|-------------|----------|
| UNSPSC 21.0 | 39121400 |
|-------------|----------|

FBS 2-5 - Plug-in bridge

3030161

<https://www.phoenixcontact.com/gb/products/3030161>



Environmental product compliance

EU RoHS

| | |
|---|--------------------|
| Fulfills EU RoHS substance requirements | Yes, No exemptions |
|---|--------------------|

China RoHS

| | |
|--|--|
| Environment friendly use period (EFUP) | EFUP-E |
| | No hazardous substances above the limits |

EU REACH SVHC

| | |
|-------------------------------------|----------------------------|
| REACH candidate substance (CAS No.) | No substance above 0.1 wt% |
|-------------------------------------|----------------------------|

Phoenix Contact 2025 © - all rights reserved
<https://www.phoenixcontact.com>

PHOENIX CONTACT Ltd
Halesfield 13, Telford
Shropshire, TF7 4PG
01952 681700
info@phoenixcontact.co.uk