

Suction cup B10XP Polyurethane 60, M5 male

Item number: B10XP.4E.01AC



- Suitable for limited level adjustment with good stability.
- Excellent gripping performance on corrugated and porous or surface leaking objects such as cardboard, textured plastic parts and composite material (raw surface)
- In the two-colored suction cup the bellows and the sealing lip are of different hardnesses, which makes the suction cup strong and stable for accelerations and speed, at the same time, soft and flexible.
- DURAFLEX® suction cups manufactured in a specially developed material that features the elasticity of rubber and wear resistance of polyurethane.
- The material DURAFLEX® is mark free.

Technical data

Description	Unit	Value
Suction cup shape	-	Bellows
Application	-	Dry sheet metal, Glass handling
Suction cup design	-	Round
Material	-	Polyurethane (PU)
Weight, min.	oz	0.021
Suction cup model	-	B-XP
Volume	in ³	0.012
Height	in	0.88
Outer diameter, min.	in	0.43
Fitting size	-	M5
Fitting option	-	None
Fitting style	-	Male
Fitting type	-	M-thread
Suction cup model	-	B10XP PU60
Movement, vertical max.	in	0.12
Curve radius, min.	in	0.24

Performance - Lifting forces

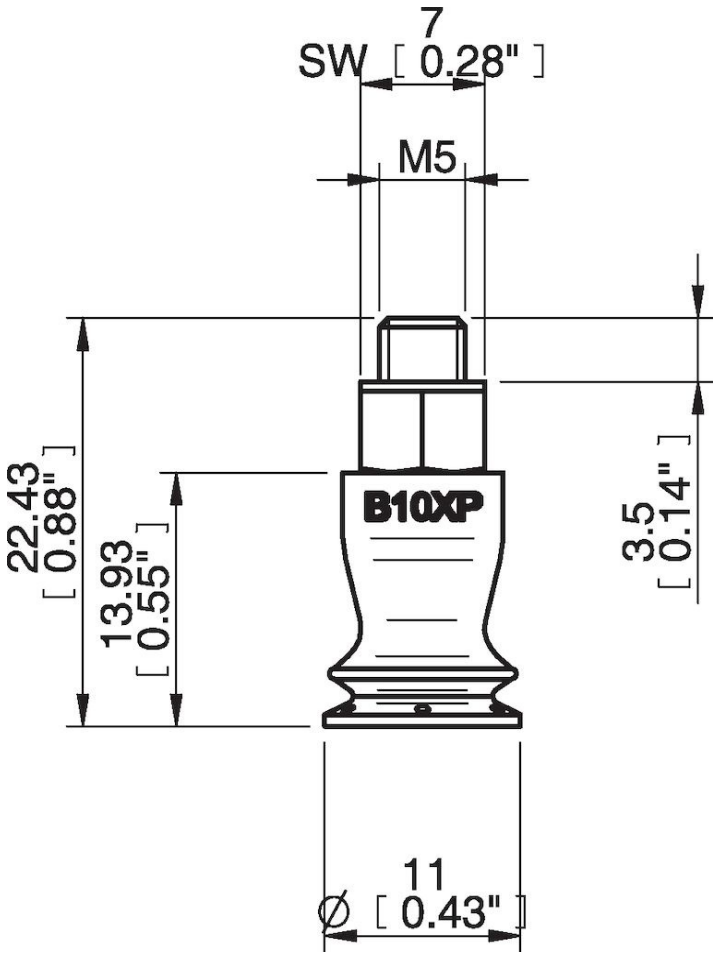
B10XP PU60	Vertical (lb)	Parallel (lb)
5.91 -inHg	0.70	0.22
17.72 -inHg	1.034	0.56
26.58 -inHg	1.24	0.67

Material	
Name	Polyurethane (PU60)
Color	Green transparent
Temperature, min. °F	50.0
Temperature max. °F	122.0
Hardness °Shore A	60

Material resistance

Alcohol	n/a
Concentrated acids	Fair
Ethanol	Fair
Hydrolysis	Fair
Methanol	Poor
Oil	Excellent
Oxidation	Poor
Gasoline	Fair
Wear resistance	Excellent
Weather and ozone	Excellent

Dimensional drawings



Values specified in this data sheet are tested at (unless otherwise stated):

- Room temperature (20°C [68°F] ± 3°C [5.5°F]).
- Standard atmosphere (101.3 [29.9 inHg] ± 1.0 kPa [0.3 inHg]).
- Relative humidity 20-70%.
- Compressed air quality, DIN ISO 8573-1 class 4.

Accessories

B10XP.4K | Suction cup B10XP Polyurethane 30/60

Spare parts

01AC | Fitting M5 male, 10–15

B10XP.4E | Suction cup B10XP Polyurethane 60